

HOIST RINGS



- Ring of movement: Pivot 180°, swivel 360°.
- MINIMUM SAFETY FACTOR = 5:1.
- Meets military specifications no. MIL-STD 1365(11) OR MIL-STD 209C.
- American HEAVY DUTY hoist rings are specified and used in nuclear energy equipment.
- 100% Magnetic Particle Inspected.
- Meets OSHA Standards.
- Destructive testing by outside independent laboratories.
- OVER 25 YEARS OF RELIABILITY.
- Largest Inventory: Over 95% of standards shipped in one day from world's largest inventory.

HEAVY DUTY HOIST RINGS PIVOT AND SWIVEL TO COMPENSATE FOR PITCH, ROLL AND SWAY WHEN LIFTING UNBALANCED LOADS.

HEAVY DUTY HOISTS RINGS REPLACE CONVENTIONAL EYEBOLTS FOR MAXIMUM LIFT IN WIDE VARIETY OF APPLICATIONS.



See what happens when heavy side loads are applied to a conventional eyebolt.



Excessive side loads can cause bolt failure.

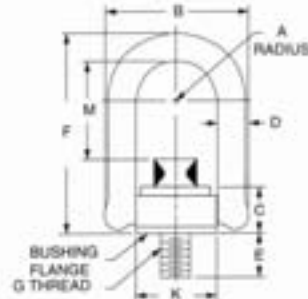
The same load applied to an American Hoist Ring is translated into a primary tension load at the screw and normal to the screw axis.



High tension loads are well within the designed safety limits of the stressed hoist ring.

HEAVY DUTY HOIST RING

Thread Size (in)	RATED LOAD CAPACITY/LBS.		
	Straight Pull	45° Lift	90° Lift
5/16 - 18	800	800	800
3/8 - 16	1000	1000	1000
1/2 - 13	2500	2500	2500
5/8 - 11	4000	4000	4000
3/4 - 10	5000	5000	5000
7/8 - 9	8000	8000	8000
1 - 8	10000	10000	10000
1 1/4 - 7	15000	15000	15000
1 3/8 - 6	20000	20000	20000
1 1/2 - 6	24000	24000	24000



Part Number	Rated Load (lbs.)	A	B	C	D	E	F	G	K	*TL ft/lb.	M	Wt. lbs.
33312	800	.65	2.29	.96	.44	.56	3.23	5/16-18	1.25	7	1.51	.52
33314	800	.65	2.29	.96	.44	1.06	3.23	5/16-18	1.25	7	1.51	.54
33312	1000	.65	2.29	.96	.44	.56	3.23	3/8-16	1.25	12	1.45	.56
33314	1000	.65	2.29	.96	.44	1.06	3.23	3/8-16	1.25	12	1.45	.58
33515	2500	1.00	3.50	1.50	.75	1.00	5.31	1/2-13	1.89	28	2.56	1.72
33516	2500	1.00	3.50	1.50	.75	1.25	5.31	1/2-13	1.89	28	2.56	1.82
33614	4000	1.00	3.50	1.50	.75	1.00	5.31	5/8-11	1.89	60	2.44	1.78
33615	4000	1.00	3.50	1.50	.75	1.25	5.31	5/8-11	1.89	60	2.44	1.88
33714	5000	1.00	3.50	1.50	.75	1.00	5.31	3/4-10	1.89	100	2.31	1.89
33716	5000	1.00	3.50	1.50	.75	1.50	5.31	3/4-10	1.89	100	2.31	2.02
33102	7000	1.40	5.10	2.05	1.00	1.20	7.00	3/4-10	2.81	100	3.20	7.23
33103	7000	1.40	5.10	2.05	1.00	1.70	7.00	3/4-10	2.81	100	3.20	7.25
33101	8000	1.40	5.10	2.05	1.00	1.20	7.00	7/8-9	2.81	160	3.07	7.33
33105	10000	1.40	5.10	2.05	1.00	1.45	7.00	1-8	2.81	230	2.95	7.57
33106	10000	1.40	5.10	2.05	1.00	1.70	7.00	1-8	2.81	230	2.95	7.63
33107	10000	1.40	5.10	2.05	1.00	2.45	7.00	1-8	2.81	230	2.95	7.81
33401	15000	2.00	6.75	2.87	1.25	2.63	9.22	1 1/4-7	2.88	470	3.74	16.0
33420	20000	2.00	6.75	2.87	1.25	2.63	9.22	1 3/8-6	2.88	670	3.62	17.2
33424	24000	2.00	6.75	2.87	1.25	2.63	9.22	1 1/2-6	2.88	800	3.49	18.1

*Recommended Torque Load.