



EYE BOLTS

Drop forged steel. Heat treated after forging. Self-colored or hot dipped galvanized. Plain or shoulder type, blank or threaded. Threaded will be supplied unless otherwise specified. Maximum blank lengths, either pattern indicated in column (1). *Indicates weight of plain pattern. Loads are based on safety factor of 5 to 1. Manufactured from C-1035 steel.

SPECIFICATIONS IN INCHES

STOCK NUMBERS		STANDARD LENGTHS BLANK OR THREADED				MAX. LENGTHS AVAILABLE EITHER PATTERN (1)	WEIGHT PER 100 IN LBS.	
Plain (A)	Shldr. (B)	SHANK		EYE			STANDARD LENGTHS	
		Dia.	Length	I.D.	O.D.		BLANK	THREADED
1	21	1/4	1	3/4	1 1/4	3	*5 - 5.6	*4.3 - 5
2	22	5/16	1 1/8	7/8	1 1/2	4	*8.7 - 10.6	*8.1 - 8.7
3	23	3/8	1 1/4	1	1 7/16	4 1/2	*15 - 19	*14 - 17.8
4	24	7/16	1 3/8	1 1/16	1 7/8	4 1/2	*26 - 28	*23 - 26
5	25	1/2	1 1/2	1 3/16	2 1/16	4 1/2	*30 - 37	*28 - 37
6	26	5/8	1 5/8	1 5/16	2 1/8	4 1/2	*53 - 55	*50 - 52
7	27	3/4	1 3/4	1 3/8	2 1/2	4 1/2	*58 - 59	*54 - 56
8	28	7/8	2	1 1/2	2 3/16	5	*85 - 95	*80 - 92
9	29	1	2 1/4	1 7/8	3 1/4	5	*140 - 168	*133 - 153
10	30	1	2 1/2	1 7/8	3 5/8	5	*210 - 246	*200 - 230
11	31	1 1/8	2 3/4	2	4	2 3/4	*312 - 350	*287 - 338
12	32	1 1/4	3	2 1/4	4 7/8	3	*447 - 463	*412 - 438
14	34	1 1/2	3 1/2	2 1/2	5 1/8	3 1/2	*725 - 738	*687 - 712



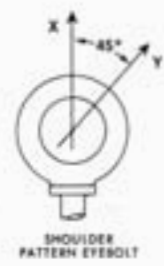
PLAIN PATTERN MAX LOAD LBS.

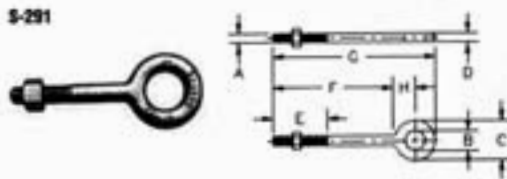
THREAD SIZE NC2A	STRAIGHT PULL X
1/4-20	500
5/16-18	900
3/8-16	1400
7/16-14	2000
1/2-13	2600
5/8-12	3000
3/4-11	4000
7/8-10	6000
1-9	7000
1-8	9000
1 1/8-7	10000
1 1/4-7	15000
1 1/2-6	19600

SHOULDER PATTERN MAX LOAD LBS.

THREAD SIZE NC2A	STRAIGHT PULL X	45° PULL Y
1/4-20	500	125
5/16-18	900	225
3/8-16	1400	350
7/16-14	2000	500
1/2-13	2600	650
5/8-12	3000	750
3/4-11	4000	1000
7/8-10	6000	1500
1-9	7000	1750
1-8	9000	2250
1 1/8-7	10000	2500
1 1/4-7	15000	3750
1 1/2-6	19600	4900

Maximum load rating for eyebolts are based on a straight vertical lift in a gradually increasing manner. Angular lifts will significantly lower maximum loads (see Shoulder Pattern table) and should be avoided whenever possible. If an angular lift is required, a properly seated Shoulder Pattern eyebolt must be used. Angular lifts must never be more than a 45° pull.

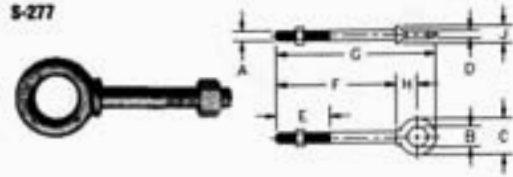




S-291
REGULAR NUT
Hot Dip Galvanized, Forged Steel

Shank Dia. & Length (in)	Length of Thread (in)	Eye Dim.		Working Load Limit* (lbs)	Weight Per 100 (lbs)
		I.D. (in)	O.D. (in)		
1/4 x 2	1 1/2	1/2	1	500	6.00
1/4 x 4	2 1/2	1/2	1	500	13.50
5/16 x 2 1/4	1 1/2	5/8	1 1/4	800	18.75
5/16 x 4 1/4	2 1/2	5/8	1 1/4	800	25.00
3/8 x 2 1/2	1 1/2	3/4	1 1/2	1200	24033
3/8 x 4 1/2	2 1/2	3/4	1 1/2	1200	37.50
3/8 x 6	2 1/2	3/4	1 1/2	1200	43.75
1/2 x 3 1/4	1 1/2	1	2	2200	50.00
1/2 x 6	3	1	2	2200	62.50
1/2 x 8	3	1	2	2200	75.00
1/2 x 10	3	1	2	2200	88.00
1/2 x 12	3	1	2	2200	100.00
5/8 x 4	2	1 1/4	2 1/2	3500	101.25
5/8 x 6	3	1 1/4	2 1/2	3500	120.00
5/8 x 8	3	1 1/4	2 1/2	3500	131.00
5/8 x 10	3	1 1/4	2 1/2	3500	162.50
5/8 x 12	4	1 1/4	2 1/2	3500	175.00
3/4 x 4 1/2	2	1 1/2	3	5200	185.90
3/4 x 6	3	1 1/2	3	5200	180.00
3/4 x 8	3	1 1/2	3	5200	200.00
3/4 x 10	3	1 1/2	3	5200	237.50
3/4 x 12	4	1 1/2	3	5200	251.94
3/4 x 15	5	1 1/2	3	5200	300.00
7/8 x 5	2 1/2	1 3/4	3 1/2	7200	275.00
7/8 x 8	4	1 3/4	3 1/2	7200	325.00
7/8 x 12	4	1 3/4	3 1/2	7200	400.00
1 x 6	3	2	4	10000	425.00
1 x 9	4	2	4	10000	452.00
1 x 12	4	2	4	10000	550.00
1 x 18	7	2	4	10000	650.00
1 1/4 x 8	4	2 1/2	5	15200	750.00
1 1/4 x 12	4	2 1/2	5	15200	900.00
1 1/4 x 20	6	2 1/2	5	15200	1150.00

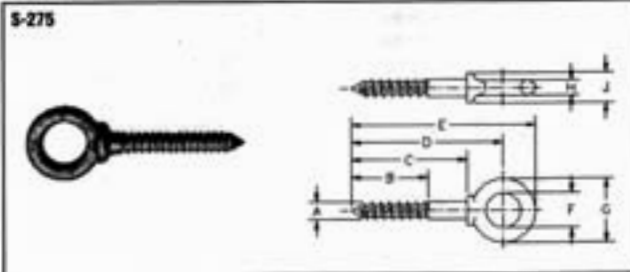
*Ultimate Load is five times the Working Load Limit.



S-277
SHOULDER NUT
Hot Dip Galvanized, Forged Steel

Shank Dia. & Length (in)	Length of Thread (in)	Eye Dim.		Working Load Limit* (lbs)	Weight Per 100 (lbs)
		I.D. (in)	O.D. (in)		
1/4 x 2	1 1/2	1/2	7/8	500	6.61
1/4 x 4	2 1/2	1/2	7/8	500	8.61
5/16 x 2 1/4	1 1/2	5/8	1 1/8	800	12.50
5/16 x 4 1/4	2 1/2	5/8	1 1/8	800	18.75
3/8 x 2 1/2	1 1/2	3/4	1 3/8	1200	19.00
3/8 x 4 1/2	2 1/2	3/4	1 3/8	1200	31.58
1/2 x 3 1/4	1 1/2	1	1 3/4	2200	37.50
1/2 x 6	3	1	1 3/4	2200	56.25
5/8 x 4	2	1 1/4	2 1/4	3500	75.00
5/8 x 6	3	1 1/4	2 1/4	3500	100.25
5/8 x 8	3	1 1/4	2 1/4	3500	125.00
3/4 x 4 1/2	2	1 1/2	2 3/4	5200	125.00
3/4 x 6	3	1 1/2	2 3/4	5200	150.00
7/8 x 5	2 1/2	1 3/4	3 1/4	7200	225.00
1 x 6	3	2	3 3/4	10000	375.00
1 x 9	4	2	3 3/4	10000	429.00
1 1/4 x 8	4	2 1/2	4 1/2	15200	650.00
1 1/4 x 12	4	2 1/2	4 1/2	15200	775.00
1 1/4 x 15	6	3	5 1/2	21400	1425.00

All bolts hot dip galvanized after threading. Hex nuts are American Standard Heavy, hot dip galvanized.
*Ultimate Load is five times the Working Load Limit.



S-275

SCREW EYE BOLTS
Hot Dip Galvanized, Forged Steel

Shank Dia. & Length (in)	Eye Dim. Shoulder		Weight Per 100 (lbs)
	I.D. (in)	O.D. (in)	
1/4 x 2	1/2	7/8	4.25
5/16 x 2 1/4	5/8	1 1/8	6.25
3/8 x 2 1/2	3/4	1 3/8	18.75
1/2 x 3 1/4	1	1 3/4	37.50
5/8 x 4	1 1/4	2 1/4	68.75

All eye bolts are quenched and tempered except size 1/4" thru 3/8" are normalized.



EYE BOLTS

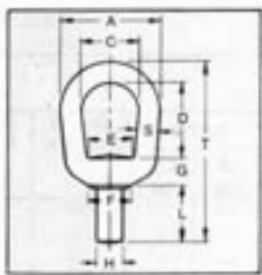


S-405

*Ultimate Load is five times the Working Load Limit.

*Based on thread size equal to specified shank diameter.

LIFTING EYES Forged Steel, Quenched and Tempered



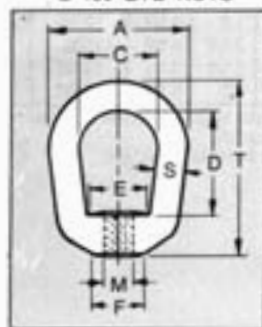
Size No.	DIMENSIONS (in)										Weight (lbs)	Working Load Limit (lbs)*
	A	C	D	E	F	G	H	L	S	T		
1	1 1/4	3/4	1 1/8	15/32	1/2	3/8	5/16	1 1/16	1/4	2 3/4	10	850
2	1 1/4	1	1 1/4	3/4	5/16	1/2	3/8	15/16	1/4	3	20	1,250
3	2	1 1/4	1 1/2	1	13/16	3/4	1/2	1 1/4	3/8	3 3/4	25	2,250
4	2 1/2	1 1/2	2	1 1/8	1	11/16	3/4	1 1/2	1/2	4 1/16	79	3,600
5	3	1 3/4	2 3/8	1 3/8	1 1/8	7/8	3/4	1 3/4	3/8	5 3/8	125	5,200
6	3 1/2	2	2 3/4	1 3/4	1 1/4	15/16	3/4	2	3/4	6 1/2	225	7,200
7	4	2 1/4	3 1/8	1 3/4	1 1/2	1 1/8	1	2 1/8	3/4	7 1/8	325	10,000
8	4 1/2	2 1/2	3 1/2	1 15/16	1 3/4	1 1/4	1 1/8	2 1/2	1	8 1/4	470	12,500
10	5 1/4	3 1/4	4	2 1/4	2 3/8	1 1/2	1 3/8	2 1/16	1 1/4	9 1/16	933	18,000



G-400 EYE NUTS

Forged Steel, Hot Dip Galvanized, Threaded, Quenched and Tempered

EYE NUTS



Size No.	Std. Tap M	DIMENSIONS (in)							Max. Tap Size Possible	Weight (lbs)	Working Load Limit (lbs)
		A	C	D	E	F	S	T			
1	1/4	1 1/4	3/4	1 1/8	21/32	1/2	1/4	1 1/16	3/8	.09	520
1A	5/16	1 1/4	3/4	1 1/8	21/32	1/2	1/4	1 1/16	3/8	.09	850
2	3/8	1 1/4	1	1 1/4	3/4	5/8	5/16	2 1/16	7/16	.18	1,250
3	7/16	2	1 1/4	1 1/2	1	13/16	3/4	2 1/2	1/2	.29	1,700
3A	1/2	2	1 1/4	1 1/2	1	13/16	3/4	2 1/2	3/4	.28	2,250
4	1/2	2 1/2	1 1/2	2	1 1/8	1	1/2	3 1/8	3/4	.58	3,600
5	3/4	3	1 3/4	2 3/8	1 3/8	1 1/8	3/4	3 3/8	3/4	1.00	5,200
6	7/8	3 1/2	2	2 3/4	1 3/4	1 1/4	3/4	4 5/8	1	1.70	7,200
7	1	4	2 1/4	3 1/8	1 3/4	1 1/2	3/4	5	1 1/4	2.75	10,000
7A	1 1/8	4	2 1/4	3 1/8	1 3/4	1 1/2	3/4	5	1 1/4	2.75	12,300
8	1 1/4	4 1/2	2 1/2	3 1/2	1 15/16	1 3/4	1	5 3/4	1 1/2	3.85	15,500
9	1 3/8	5	2 3/4	3 3/4	2	2	1 1/4	6 1/4	1 1/2	5.00	18,500
10	1 1/2	5 1/4	3 1/4	4	2 1/4	2 1/4	1 1/4	6 3/4	1 3/4	6.70	22,500
11	2	7	4	6 1/4	4	3 3/8	1 1/2	10	2 1/4	18.70	40,000

*Ultimate Load is five times the Working Load Limit.
ORDER EYE NUTS BY SIZE NUMBER

PAD EYES Forged Steel, Quenched and Tempered

except Size No. 0 is as forged.
Forged from 1035 carbon steel with excellent qualities for welding, widely used on farm machinery, trucks, steel-hulled marine vessels, and material handling equipment.

Size No.	Inside Diam. of Eye (in)	Outside Diam. of Eye (in)	Diam. of Shoulder (in)	Overall Height (in)	Weight Per 100 (lbs)
*0	1/4	3/4	5/8	3/4	2.77
*1	3/8	7/8	7/8	1 1/32	6.94
*1 1/2	5/8	1 1/4	1	1 1/8	10.25
2	3/4	1 1/2	1 1/8	1 3/8	17.25
4	1	2 1/4	1 1/4	2 1/32	50.00
5	1 1/4	2 3/4	1 3/4	2 1/2	82.50

*Meets Military Specification MS-51930A



S-264